

Inserting the SIM card

This page shows you how to insert the SIM into your Verofy® Move. You would only need to do this in rare circumstances, such as if you've received a replacement terminal or you've had to remove the SIM card as part of troubleshooting.

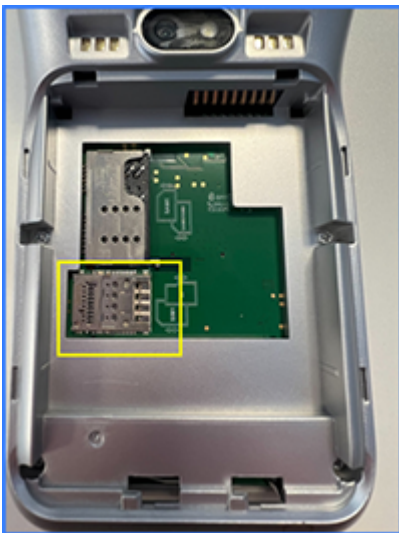
1. Slide the unlock mechanism at the bottom centre of your Verofy® Move to the right to unlock the back of the terminal.



2. When you take the back off the terminal, you'll see the battery. Remove the battery.



3. You'll then see where the SIM card holder is located.



4. Insert the SIM by sliding it towards the left into the SIM card holder. Make sure the SIM is inserted in the correct way (as the diagram below shows).



5. Once you've inserted the SIM, return the battery. Be sure to insert the battery the correct way (the top right of the battery should be inserted so it touches the gold pins within the battery area in the terminal).



6. Once the battery is re-inserted, place the back of the terminal back onto the Verofy® Move. To secure in place, move the lock mechanism to the left to lock the back panel in place.



7. You should now be able to turn the terminal back on. We recommend that you **check the connection** to determine if the SIM is successfully installed. If you can't see a successful signal, you can also check out the GPRS settings by clicking **here**.

That's how to insert your SIM card.

Revision #11

Created 2 May 2023 13:24:14 by Verofy® Support

Updated 3 November 2025 12:32:11 by Verofy® Support