

Locating the SIM Card

This page provides information on how to locate the SIM card in your Verofy® Move, should you ever need to.

In the unfortunate event that you need a replacement terminal, or you're experiencing issues with SIM connection, you might need to remove the SIM card in your Verofy® Move.

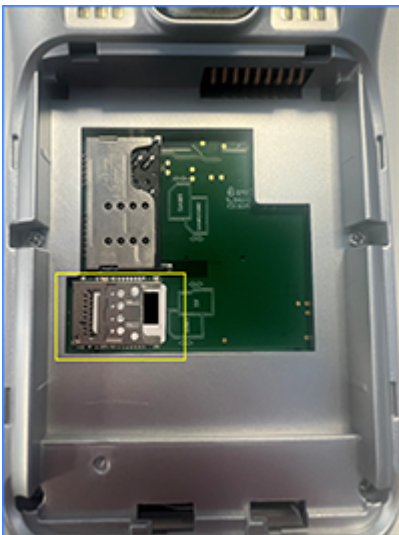
1. To find the SIM card, turn the terminal over so you can see the back. You'll see a lock mechanism in the bottom centre of the terminal. Slide this to the right to unlock the back of the terminal.



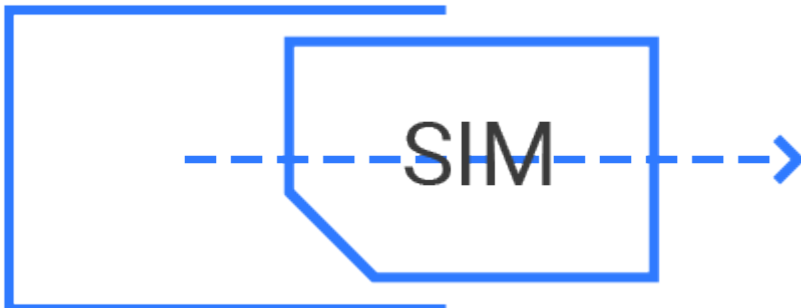
2. When you take the back off the terminal, you'll see the battery. Remove the battery.



3. You'll then see where the SIM card is located.



4. To remove it, carefully slide the SIM card to the right to release it from the SIM holder.



Remember to keep the SIM card safe if you remove it.

That's how to locate your SIM card.

Revision #9

Created 28 April 2023 15:18:26 by Verofy® Support

Updated 7 May 2024 15:25:14 by Verofy® Support